

TAURUS L

Taurus L ECU

This ECU is used in every kind of automotive to:

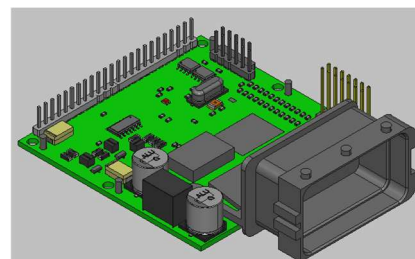
- *Read various vehicle parameters;*
- *Translate message from a CAN to another;*
- *Manage the correct dialogue between different ECU and different protocols.*



Technical Specification:

Technical Specification:

Characteristic	Unit	Value	Remark
Nominal Input voltage	V	12	DC
Acceptable Input voltage	V	6-32	DC
Short to battery		All Inputs – PWM Outputs	
Short to Ground		All Inputs – PWM Outputs	
Transient Voltage	V	+37 to +50	
Reverse Polarity	V	-28	
Main Microprocessor	bit	32	
CAN interface	kbps	500	3 CAN + 3 CAN FD
Switch On		Through CAN interface	
Delay Power OFF		Calibrable	
PWM Outputs		4 (with individual settings)	
PWM Current	mA	10	
PWM frequency	Hz	200	Max
Output Voltage	V	0 - 24	
Minimum Energy Consumption	mA	120	
Energy Consumption @vehicle OFF	μA	10	Dark Current
Current Consumption	mA	200 (logic)	24 V
Hold of functional state	ms	100 (min)	In absence of power supply
Operating Temperature	° C	-40 / +85	
Degree of Protection		IP64	



ECU Characteristics:

This ECU working as a translator box (named Gateway for simplicity) between five CAN networks: two Standard CAN plus three FD-CAN.

The Gateway is needed to adapt a new set of ECU from a new architecture, exchanging information thru FD14-CAN, FD2-CAN, FD3-CAN, to an existing vehicle architecture exchanging information thru C1-CAN, C2-CAN.



Via Yuri Gagarin 31

42123 Reggio Emilia

Tel +39 0522361134

Fax +39 0522360806

Internet: www.cf3000.it

email: cf3000@cf3000.it