

TAURUS K

Taurus K ECU

This ECU is used in every kind of automotive to:

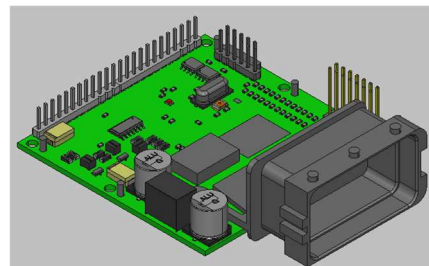
- *Read various vehicle parameters;*
- *Translate message from a CAN to another;*
- *Manage the correct dialogue between different ECU and different protocols.*



Technical Specification:

Technical Specification:

Characteristic	Unit	Value	Remark
Nominal Input voltage	V	12	DC
Acceptable Input voltage	V	6-32	DC
Short to battery		All Inputs – PWM Outputs	
Short to Ground		All Inputs – PWM Outputs	
Transient Voltage	V	+37 to +50	
Reverse Polarity	V	-28	
Main Microprocessor	bit	32	
CAN interface	kbps	500	3 CAN
Switch On		Through CAN interface	
Delay Power OFF		Calibrable	
PWM Outputs		4 (with individual settings)	
PWM Current	mA	10	
PWM frequency	Hz	200	Max
Output Voltage	V	0 - 24	
Minimum Energy Consumption	mA	120	
Energy Consumption @vehicle OFF	μA	10	Dark Current
Current Consumption	mA	200 (logic)	24 V
Hold of functional state	ms	100 (min)	In absence of power supply
Operating Temperature	° C	-40 / +85	
Degree of Protection		IP64	



ECU Characteristics:

This ECU working as a translator box (named Gateway for simplicity) between three CAN networks.

The ECU can control relays and it's modified with an Addon radio that allow us to receive information at 433 Hz.



Via Yuri Gagarin 31

42123 Reggio Emilia

Tel +39 0522361134

Fax +39 0522360806

Internet: www.cf3000.it

email: cf3000@cf3000.it